

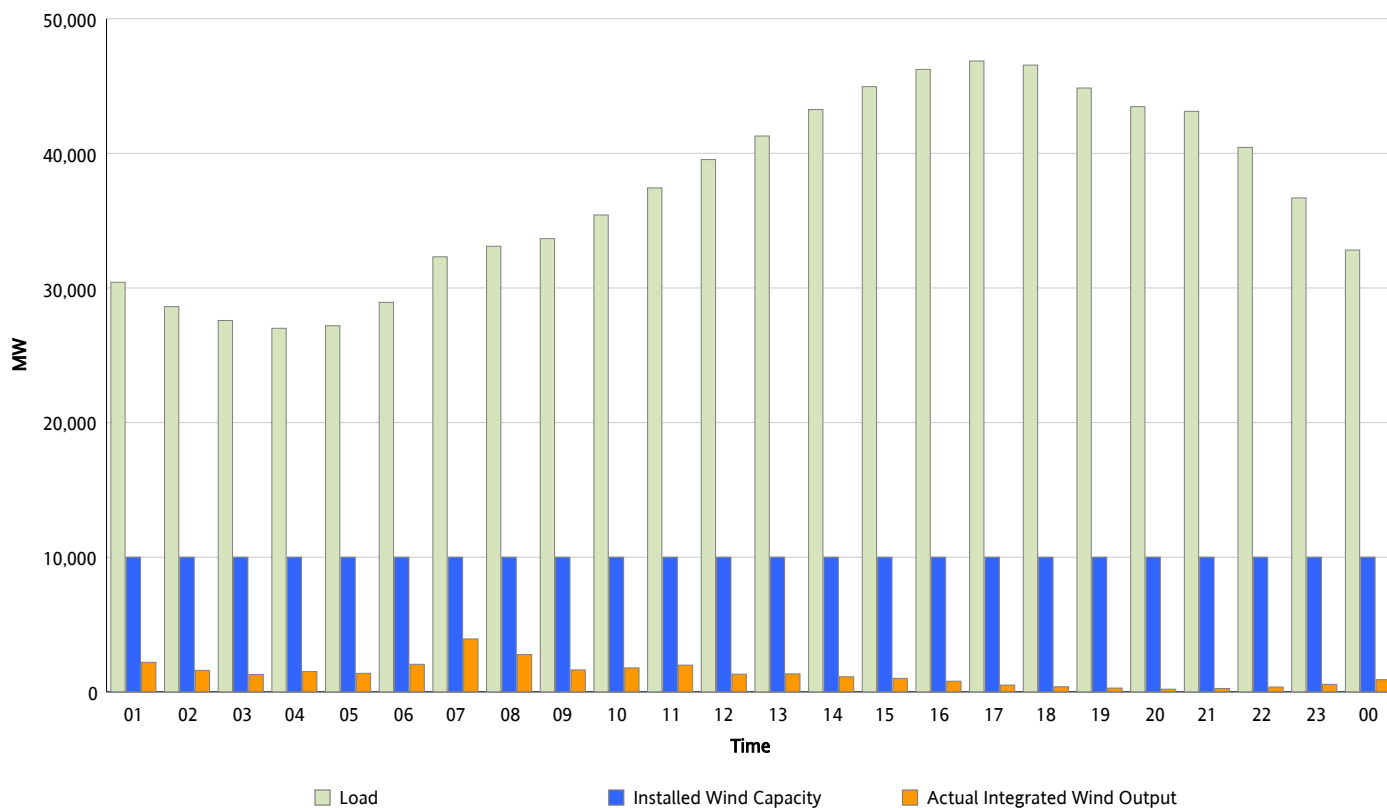


## ERCOT Grid Operations

### Wind Integration Report : 09/18/2012

Peak Load	46,857 MW
Load Peak Hour (HE)	17
Wind Over Peak	506 MW
Wind Record 06/19/12	8,368 MW
Max Wind Value*	4,649 MW
Wind Peak Time	06:09
Wind Integration %	14.87 %

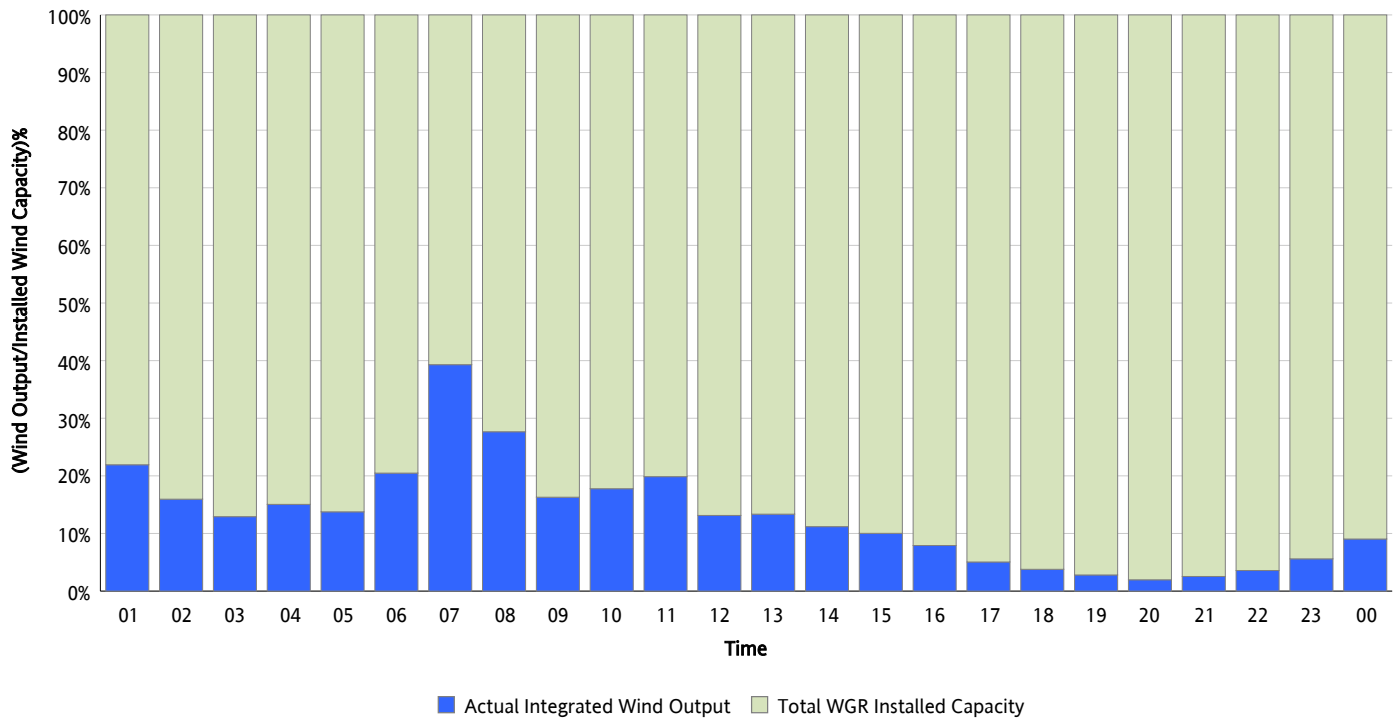
**Hourly Average Actual Load vs. Actual Wind Output**  
**09/18/2012**



*\* Wind Record and Wind Max represent instantaneous values and the rest of the values are integrated over the hour*

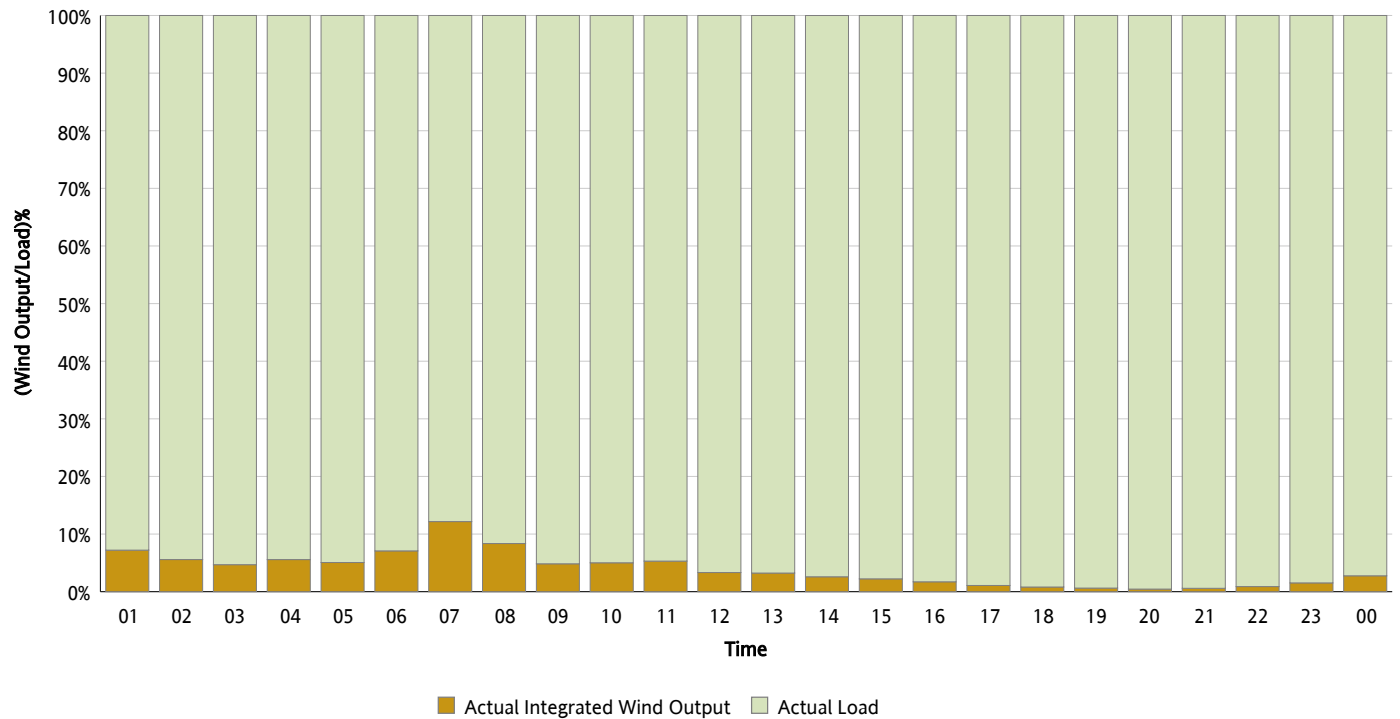
## Actual Wind Output as a Percentage of the Total Installed Wind Capacity

09/18/2012



## Actual Wind Output as a Percentage of the ERCOT Load

09/18/2012



## ERCOT Load vs. Actual Wind Output

09/11/2012 - 09/18/2012

